

ROYAL GEOGRAPHICAL SOCIETY
1 – 4 FEBRUARY 2018

Karen Taylor Fine Art

invites you to the

Works on Paper Fair

for the Opening Preview

Wednesday 31 January 2018

or any day between

Thursday 1 February

to

Sunday 4 February



www.worksonpaperfair.com
01798 215 007

Bring this ticket to the fair for free entry for two people on any day

You may print out this ticket or show it on your phone or tablet.

You may also download up to two further free tickets using code "Taylor" at worksonpaperfair.com

Normal admission prices:
Wednesday £35. Thursday – Sunday £20.

Opening Preview

Wednesday 31 January	3pm - 9pm
Thursday 1 February	11am - 9pm
Friday 2 February	11am - 6pm
Saturday 3 February	11am - 6pm
Sunday 4 February	11am - 6pm

Last entry 15 minutes before closing.

Royal Geographical Society
Use entrance on Exhibition Road
Postcode for sat-nav purposes: SW7 2QQ



Please complete your details to validate this ticket.

Title..... Name.....

Address

..... Postcode

Email

We respect your privacy and will never pass your details to any third party.

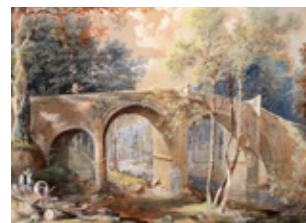
Tick here to allow the Works on Paper Fair to communicate directly with you: by email by post

You may contact us at any time to update your consent preferences, on info@worksonpaperfair.com or 01798 215 007.

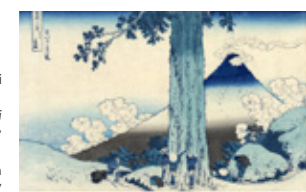
The Works on Paper Fair, run by Hodgson Events Ltd, is held at the Royal Geographical Society (with The Institute of British Geographers), 1 Kensington Gore, London, SW7 2AR.

drawings • watercolours
original prints • artists' books
photographs • posters

The Works on Paper Fair presents art on paper for sale from every period, from the 16th Century through to the Victorian era, to Modern British and Contemporary work.



John Gendall (1790 – 1865)
Fingle Bridge, Dartmoor
Watercolour over black chalk heightened with bodycolour
To be exhibited by Guy Peppiatt Fine Art



Katsushika Hokusai (1760 – 1849)
Mishima Pass in Kai Province
Woodblock print. c.1831
To be exhibited by Japan Print Gallery



Howard Hodgkin (1932 – 2017)
Still Life, 1980
Screenprint
To be exhibited by Marcus Campbell



Tom Hammick (b. 1963)
Wanderer
Reduction woodcut, 2017
To be exhibited by Flowers Gallery



Mark von Arenburg (fl. 1950s)
Fly to Jamaica by Clipper
Original poster. c. 1950
To be exhibited by Kiki Werth & Barclay Samson

Talks Programme

All talks held in the RGS Ondaatje Theatre.

For full information on talks and to buy tickets: worksonpaperfair.com or 01798 215 007

The Art of Gardens for Horatio's Garden
Wednesday 31 January 6.30pm £35

Garden designers and presenters James Alexander-Sinclair, Bunny Guinness, Tom Stuart-Smith, Joe Swift and Cleve West, in conversation with Rachel de Thame.



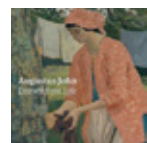
Art Fund Talk
Thursday 1 February 6.30pm £30

Following the previous hugely popular lectures by Simon Schama and Andrew Graham-Dixon, a special guest speaker will talk in support of the Art Fund.



David Boyd Haycock Augustus John
Friday 2 February 2.30pm £10

Ahead of the May 2018 publication of his book *Augustus John – Drawn from Life*, the author will talk about John's early career and his talented friends and rivals.



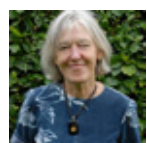
Jenny Uglow Edward Lear
Saturday 3 February 11.30am £10

In *Edward Lear: A Life of Art and Nonsense*, Uglow explores Lear's genius – as a natural history artist, a landscapist and a creator of unforgettable nonsense.



Libby Horner Urushibara and Brangwyn
Saturday 3 February 2.30pm £10

A talk examining the work of Japanese printmaker Yoshijiro Urushibara, who collaborated with Frank Brangwyn to produce exquisite colour woodcuts.



Emma Mason The Guinness Lithographs
Sunday 4 February 2.30pm £10

Print specialist Emma Mason will show how the Guinness Lithographs of 1956 and 1962 give a valuable insight into the social and artistic life of post war Britain.

